

# PARKING LOT RECONSTRUCTION

CAMERON COUNTY, TEXAS

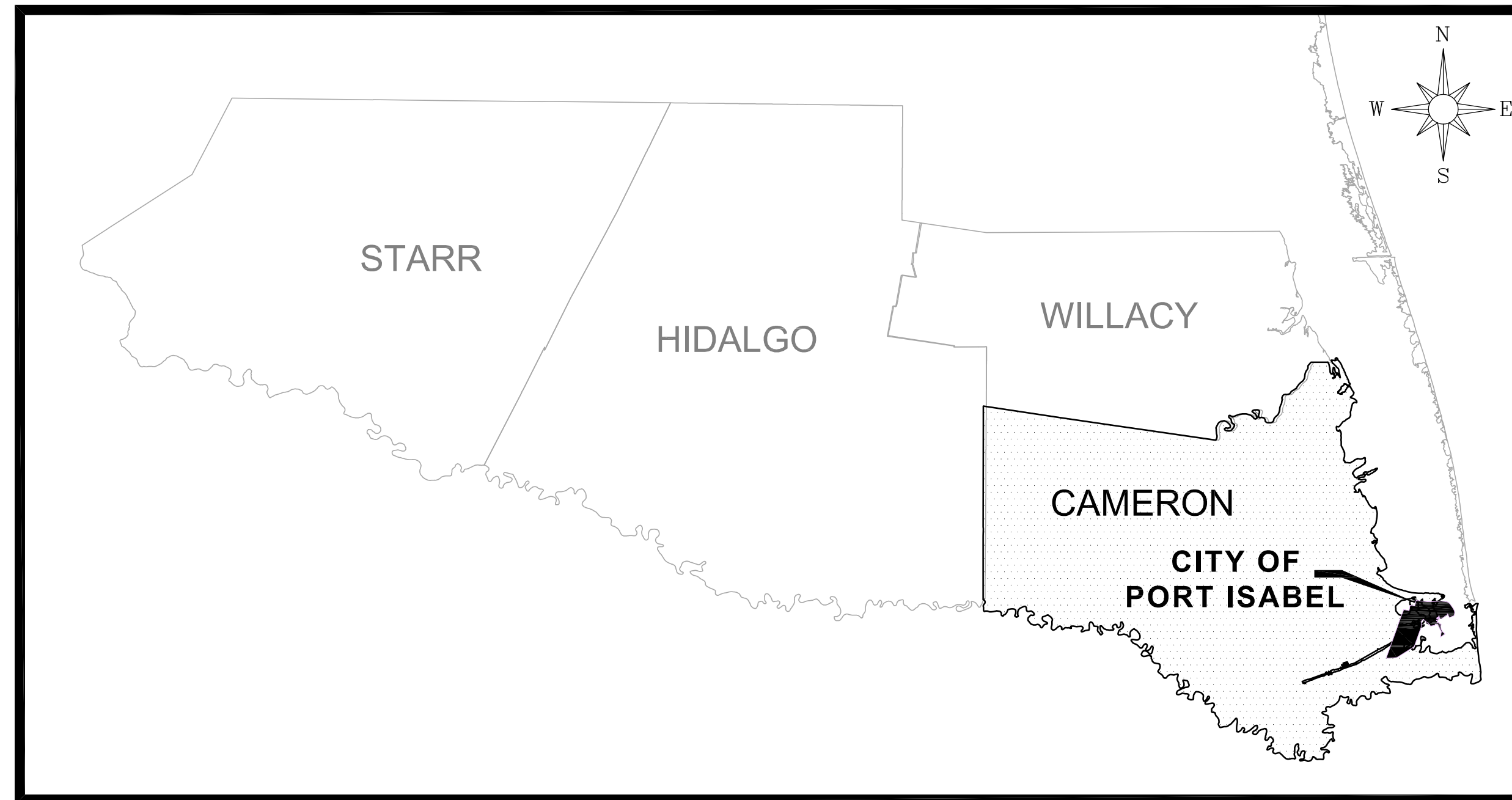
## 2024

### BOARD OF DIRECTORS

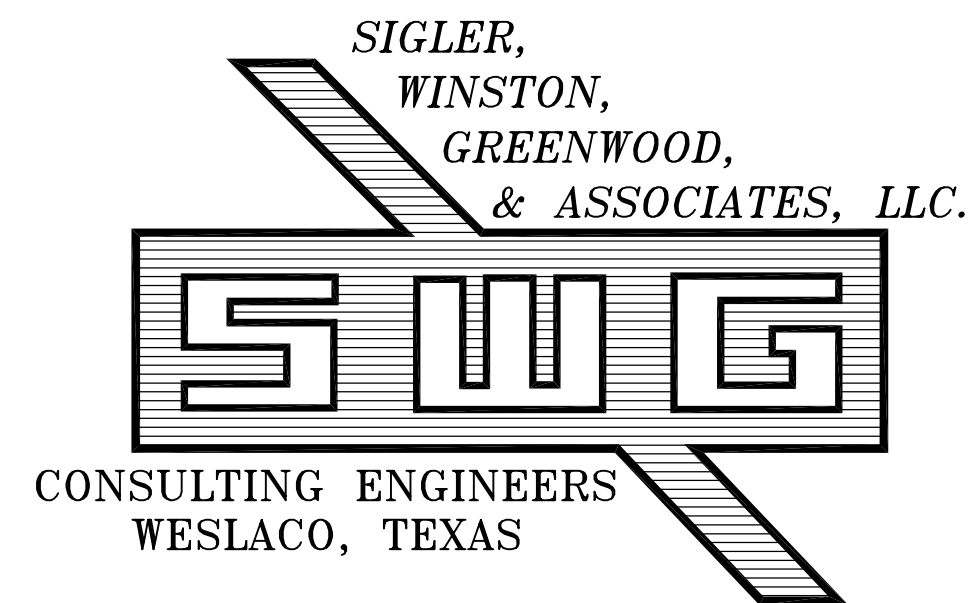
SCOTT D. FRIEDMAN ..... CHAIRMAN  
 ADAM LALONDE ..... VICE CHAIRMAN  
 DAVE BOUGHTER ..... DIRECTOR  
 BILL DONAHUE ..... DIRECTOR  
 JASON STARKEY ..... SECRETARY

### SHEET INDEX

C0.0	COVER SHEET
C1.0	GENERAL NOTES
C2.0	LOCATION MAP
C3.0	EXISTING CONDITIONS
C4.0	DEMOLITION PLAN
C5.0	CONCRETE PAVING PLAN
C6.0	CONCRETE PAVING GRADING PLAN



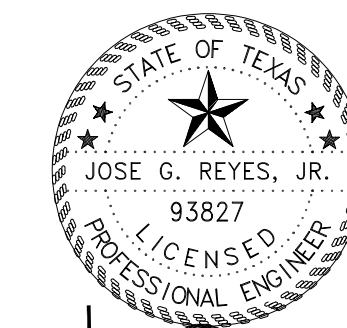
RIO GRANDE VALLEY



611 BILL SUMMERS INTL. BLVD.  
 WESLACO, TEXAS 78596  
 (956)-968-2194 OFFICE (956)-968-8300 FAX  
 TEXAS FIRM REGISTRATION NO. F-592

SINCE 1945  
 COPYRIGHT 2024 SWG ENGINEERING, LLC

PROJECT: 22-125



*Jose G. Reyes, Jr., P.E.*

THE SEAL APPEARING ON THIS DOCUMENT WAS AUTHORIZED BY JOSE G. REYES, JR., P.E. 93827. ALTERATION OF A SEALED DOCUMENT WITHOUT PROPER NOTIFICATION TO THE RESPONSIBLE ENGINEER IS AN OFFENSE UNDER THE TEXAS ENGINEERING PRACTICE ACT.



ISSUED FOR CONSTRUCTION

GENERAL NOTES:

- 1. CONTRACTOR TO VERIFY LOCATION AND ELEVATION OF EXISTING FACILITIES PRIOR TO CONSTRUCTION OF PROPOSED FACILITIES (NO SEPARATE PAY). ANY DISCREPANCIES SHALL BE BROUGHT TO THE ATTENTION OF THE CITY ENGINEER IN WRITING PRIOR TO COMMENCEMENT OF CONSTRUCTION. ANY DAMAGE TO EXISTING FACILITIES INCURRED AS A RESULT OF THIS CONSTRUCTION OPERATION WILL BE REPAIRED BY THE CONTRACTOR AT HIS OWN EXPENSE.

GENERAL CONCRETE NOTES:

- 1. ALL CONCRETE WORK TO BE FORMED, UNLESS OTHERWISE APPROVED.
- 2. ALL CONCRETE TO BE 4000-PSI MINIMUM AT 28 DAYS, UNLESS OTHERWISE SHOWN.
- 3. STRENGTH TO BE DETERMINED BY CYLINDER BREAK TEST.

SANITARY SEWER CONSTRUCTION NOTES:

- 1. ALL PROPOSED SEWER LINES WILL BE SDR 26 PIPE MATERIAL UNLESS OTHERWISE NOTED.)
- 2. CONTRACTOR TO PROVIDE DEFLECTION TEST IN ACCORDANCE WITH TCEQ CHAPTER 317.2 (a) (4) (c). MANDREL TO BE PULLED IN BOTH DIRECTIONS.
- 3. THE SMALL INSTAGLE CORRECTIVE ACTION FOR ANY MANDREL TESTING THAT FAILS AND MUST HAVE THE SEWER LINE RE-TESTED AT THE CONTRACTOR'S COST UNTIL ALL TESTING HAS BEEN SATISFACTORILY COMPLETED.

WATER LINE CONSTRUCTION NOTES:

- 1. ALL WATER LINES TO BE C-900 DR18 PVC UNLESS OTHERWISE NOTED.
- 2. DOUBLE CHECK VALVE WILL BE REQUIRED WHEN FLUSHING NEW WATERLINE PRESSURE TESTING.
- 3. ALL WATER AND WASTEWATER COLLECTION LINE CROSSING TO BE CONSTRUCTED IN ACCORDANCE WITH TCEQ REGULATION, CHAPTER 290 AND 317.

TEXAS COMMISSION ON ENVIRONMENTAL QUALITY (TCEQ) RULES AND REQUIREMENTS

THE CONTRACTOR SHALL STRICTLY ADHERE TO TCEQ RULES AND REGULATIONS WHICH REGULATE THE INSTALLATION AND TESTING OF DOMESTIC WATER AND WASTEWATER PROJAS DETAILED IN 30 TAC, CHAPTER 317.1 OF THE TNRC/TCEQ RULES. ALL MINIMUM SEPARATION DISTANCES AND CROSSING REQUIREMENTS ARE TO BE STRICTLY ADHERED TO. IT IS THE CONTRACTOR'S REWPONSIBILITY FOR THE ADHERENCE TO THESE REQUIREMENTS.

TRAFFIC NOTES:

- 1. IT IS THE CONTRACTOR'S SOLE RESPONSIBILITY TO SEE THAT ALL TRAFFIC CONTROL DEVICES ARE PROPERLY INSTALLED AND MAINTAINED AT THE JOB SITE IN ACCORDANCE WITH THE PLANS, SPECIFICATIONS AND RELATED INDUSTRY STANDARDS AND REGULATIONS. THE CONTRACTOR SHALL SUBMIT FOR REVIEW A SIGN AND BARRICADE PLAN CONFORMING THE REQUIREMENTS OF THE TEXAS MANUAL ON UNIFORM TRAFFIC CONTROL DEVICES. THE CITY'S CONSTRUCTION INSPECTOR AND THE TRAFFIC ENGINEERING REPRESENTATIVE WILL BE RESPONSIBLE ONLY TO INSPECT THE TRAFFIC CONTROL DEVICES BEING EMPLOYED. IF IN THE OPINION OF THE TRAFFIC ENGINEERING REPRESENTATIVE AND THE CONSTRUCTION INSPECTOR, THE TRAFFIC CONTROL DEVICES DO NOT CONFORM TO ESTABLISHED STANDARDS OR ARE INCORRECTLY PLACED OR ARE INSUFFICIENT IN QUANTITY TO PROTECT THE GENERAL PUBLIC, THE CONSTRUCTION INSPECTOR SHALL HE THE OPTION TO STOP CONSTRUCTION OPERATIONS AT NO EXPENSE TO THE CITY UNTIL SUCH TIME AS THE CONDITIONS ARE CORRECTED BY THE CONTRACTOR.

PAVING CONSTRUCTION NOTES:

- 1. PAVEMENT TESTING AND COMPACTION SHALL BE AS FOLLOWS: SUBGRADE: 95% PROCTOR AT EVERY 1,000 SQUARE YARDS, BASE:98% PROCTOR AT EVERY 1,000 SQUARE YARDS, HMA: EVERY 1,500 SQUARE YARDS OR FRACTION THEREOF FOR THICKNESS VERIFICATION.
- 2. HOT MIX ASPHALT CONCRETE TO BE IN ACCORDANCE WITH TxDOT SPECIFICATION TYPE "D" ITEM 340.
- 3. SUBGRADE EXCAVATION AND RE-COMPACTION TO BE INCLUDED IN PRICE BID PER SQUARE YARD FOR "LIME TREATED SUBGRADE."

STORM SEWER NOTES:

- 1. MANHOLE FRAMES AND COVERS AND WATER VALVE BOXES SHALL BE RAISED TO FINISHED PAVEMENT GRADE AT THE OWNER'S EXPENSE BY THE CONTRACTOR WITH CITY INSPECTION. ALL UTILITY ADJUSTMENTS SHALL BE COMPLETED PRIOR TO FINAL PAVING CONSTRUCTION. CONTRACTOR SHALL BACKFILL AROUND MANHOLES AND JUNCTION BOXES WITH CLASS A CONCRETE.
- 2. ALL MANHOLE LIDS SHALL BE 32" OR LARGER, UNLESS EXPRESSLY APPROVED IN WRITING BY THE ENGINEERING DEPARTMENT.
- 3. THE LOCATION OF ANY EXISTING UTILITY LINES SHOWN ON THESE PLANS IS THE BEST AVAILABLE AND MAY NOT BE ACCURATE. ANY DAMAGE TO EXISTING UTILITY LINES, BOTH KNOWN AND UNKNOWN, SHALL BE REPAIRED AT THE EXPENSE OF THE CONTRACTOR.

DEMOLITION NOTES:

- 1. THE CONTRACTOR SHALL COORDINATE WITH LMDW AND FRANCHISED UTILITY COMPANIES TO MAINTAIN SERVICES AT ALL TIMES TO NEIGHBORING PROPERTIES. THE CONTRACTOR SHALL MAINTAIN COMPLETE RECORDS INDICATING HOW THE WASTE FROM THE SITE HAS BEEN HANDLED. ALL FACILITIES TO BE REMOVED SHALL BE UNDERCUT TO SUITABLE MATERIAL AND BROUGHT TO GRADE WITH SUITABLE COMPACTED FILL MATERIAL PER THE SPECIFICATIONS IN THE GEOTECHNICAL REPORT. THE SITE, AFTER DEMOLITION SHALL BE GRADED TO ELIMINATE DEPRESSIONS, HOLES, BERMS, DIRT PILES, ETC. THE SITE IS TO BE GRADED UNTIL RELATIVELY SMOOTH AND ATTRACTIVE IN APPEARANCE PRIOR TO STABILIZATION OF EARTH. ANY FILL MATERIAL/FILL AREAS SHALL BE COMPACTED TO 95% OF STANDARD PROCTOR DENSITY AT A MOISTURE AT, OR ABOVE, OPTIMUM MOISTURE CONTENT IN MAXIMUM 8" LIFTS. CONTRACTOR SHALL PROVIDE PROOF IN THE FORM OF LAB TEST KITS THAT THIS HAS BEEN ACHIEVED.
- 2. THE CONTRACTOR IS RESPONSIBLE FOR REMOVING ALL DEBRIS FROM THE SITE AND DISPOSING THE DEBRIS IN A LAWFUL MANNER. THE CONTRACTOR IS RESPONSIBLE FOR OBTAINING ALL PERMITS REQUIRED FOR DEMOLITION AND DISPOSAL. CONTRACTOR SHALL BE RESPONSIBLE FOR REVIEWING THE PHASE I ENVIRONMENTAL SITE ASSESSMENT.
- 3. LOCATIONS OF PUBLIC AND PRIVATE UTILITIES SHOWN ARE APPROXIMATE AND MAY NOT BE COMPLETE. CONTRACTOR SHALL CALL 811 AT LEAST 48 HOURS PRIOR TO COMMENCING DEMOLITION OR CONSTRUCTION ACTIVITIES. CONTRACTOR SHALL CONTACT ANY OTHER UTILITY COMPANIES WHO DO NOT SUBSCRIBE TO THE TESS PROGRAM FOR LINE MARKINGS. THE CONTRACTOR BEARS SOLE RESPONSIBILITY FOR VERIFYING LOCATIONS OF EXISTING UTILITIES, SHOWN OR NOT SHOWN, AND FOR ANY DAMAGE DONE TO THESE FACILITIES.

BENCH MARK:

LOCATED ON THE NORTHWEST CORNER OF PROPERTY WITH A SQUARE CUT ON THE CONCRETE PAVEMENT WITH COORDINATE VALUES AS FOLLOWS: (NORTHING:16553079.8301, EASTING:1404668.3839) ELEVATION: 16.90

CAUTION UNDERGROUND UTILITIES:

THE CONTRACTOR IS SPECIFICALLY CAUTIONED THAT THE LOCATION AND/OR ELEVATION OF EXISTING UTILITIES AS SHOWN ON THESE PLANS IS BASED ON RECORDS OF THE VARIOUS UTILITY COMPANIES, AND WHERE POSSIBLE MEASUREMENTS TAKEN IN THE FIELD. THE INFORMATION IS NOT TO BE RELIED ON AS BEING EXACT OR COMPLETE. THE CONTRACTOR SHALL BE REQUIRED TO LOCATE ALL PUBLIC OR PRIVATE UTILITIES INCLUDING BUT NOT LIMITED TO: WATER, SEWER, TELEPHONE, AND FIBER OPTIC LINES, SITE LIGHTING ELECTRIC, SECONDARY ELECTRIC, PRIMARY ELECTRICAL DUCT BANKS, LANDSCAPE IRRIGATION FACILITIES, AND GAS LINES. THE CONTRACTOR MUST CONTACT 1-800-DIG-TESS AND CALL THE APPROPRIATE UTILITY COMPANIES AT LEAST 72 HOURS BEFORE ANY EXCAVATION AND/OR START OF CONSTRUCTION TO REQUEST EXACT FIELD LOCATION OF UTILITIES. IT SHALL BE THE RESPONSIBILITY OF THE CONTRACTOR TO RELOCATE ALL EXISTING UTILITIES (WHETHER SHOWN ON PLANS OR NOT) WHICH CONFLICT WITH THE PROPOSED IMPROVEMENTS SHOWN ON THE PLANS. ANY UTILITY CONFLICTS THAT ARISE SHOULD BE COMMUNICATED TO THE ENGINEER IMMEDIATELY AND PRIOR TO CONSTRUCTION. ANY DAMAGE TO EXISTING UTILITIES SHALL BE THE SOLE RESPONSIBILITY OF THE CONTRACTOR AND THE REPAIR SHALL BE AT CONTRACTORS SOLE EXPENSE WHETHER THE UTILITY IS SHOWN ON THESE PLANS OR NOT.

CAUTION UNDERGROUND UTILITIES:

THE CONTRACTOR IS SPECIFICALLY CAUTIONED THAT THE LOCATION AND/OR ELEVATION OF EXISTING UTILITIES AS SHOWN ON THESE PLANS IS BASED ON RECORDS OF THE VARIOUS UTILITY COMPANIES, AND WHERE POSSIBLE MEASUREMENTS TAKEN IN THE FIELD. THE INFORMATION IS NOT TO BE RELIED ON AS BEING EXACT OR COMPLETE. THE CONTRACTOR SHALL BE REQUIRED TO LOCATE ALL PUBLIC OR PRIVATE UTILITIES INCLUDING BUT NOT LIMITED TO: WATER, SEWER, TELEPHONE, AND FIBER OPTIC LINES, SITE LIGHTING ELECTRIC, SECONDARY ELECTRIC, PRIMARY ELECTRICAL DUCT BANKS, LANDSCAPE IRRIGATION FACILITIES, AND GAS LINES. THE CONTRACTOR MUST CONTACT 1-800-DIG-TESS AND CALL THE APPROPRIATE UTILITY COMPANIES AT LEAST 72 HOURS BEFORE ANY EXCAVATION AND/OR START OF CONSTRUCTION TO REQUEST EXACT FIELD LOCATION OF UTILITIES. IT SHALL BE THE RESPONSIBILITY OF THE CONTRACTOR TO RELOCATE ALL EXISTING UTILITIES (WHETHER SHOWN ON PLANS OR NOT) WHICH CONFLICT WITH THE PROPOSED IMPROVEMENTS SHOWN ON THE PLANS. ANY UTILITY CONFLICTS THAT ARISE SHOULD BE COMMUNICATED TO THE ENGINEER IMMEDIATELY AND PRIOR TO CONSTRUCTION. ANY DAMAGE TO EXISTING UTILITIES SHALL BE THE SOLE RESPONSIBILITY OF THE CONTRACTOR AND THE REPAIR SHALL BE AT CONTRACTORS SOLE EXPENSE WHETHER THE UTILITY IS SHOWN ON THESE PLANS OR NOT.

CAUTION OVERHEAD UTILITIES

THE CONTRACTOR IS TO EXERCISE EXTREME CAUTION WHEN WORKING UNDER "HIGH VOLTAGE TRANSMISSION LINES". A WORKING HEIGHT OF 30' FROM GROUND ELEVATION WILL BE OBSERVED WHEN WORKING UNDER THE HIGH VOLTAGE LINE. COORDINATE ALL WORK WITH THE LOCAL UTILITY PROVIDER.



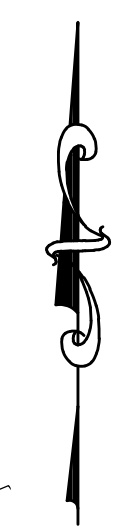
Handwritten signature of Jose G. Reyes, Jr., P.E.

THE SEAL APPEARING ON THIS DOCUMENT WAS AUTHORIZED BY JOSE G. REYES, JR., P.E. 93827 ALTERATION OF A SEALED DOCUMENT WITHOUT PROPER NOTIFICATION TO THE RESPONSIBLE ENGINEER IS AN OFFENSE UNDER THE TEXAS ENGINEERING PRACTICE ACT.

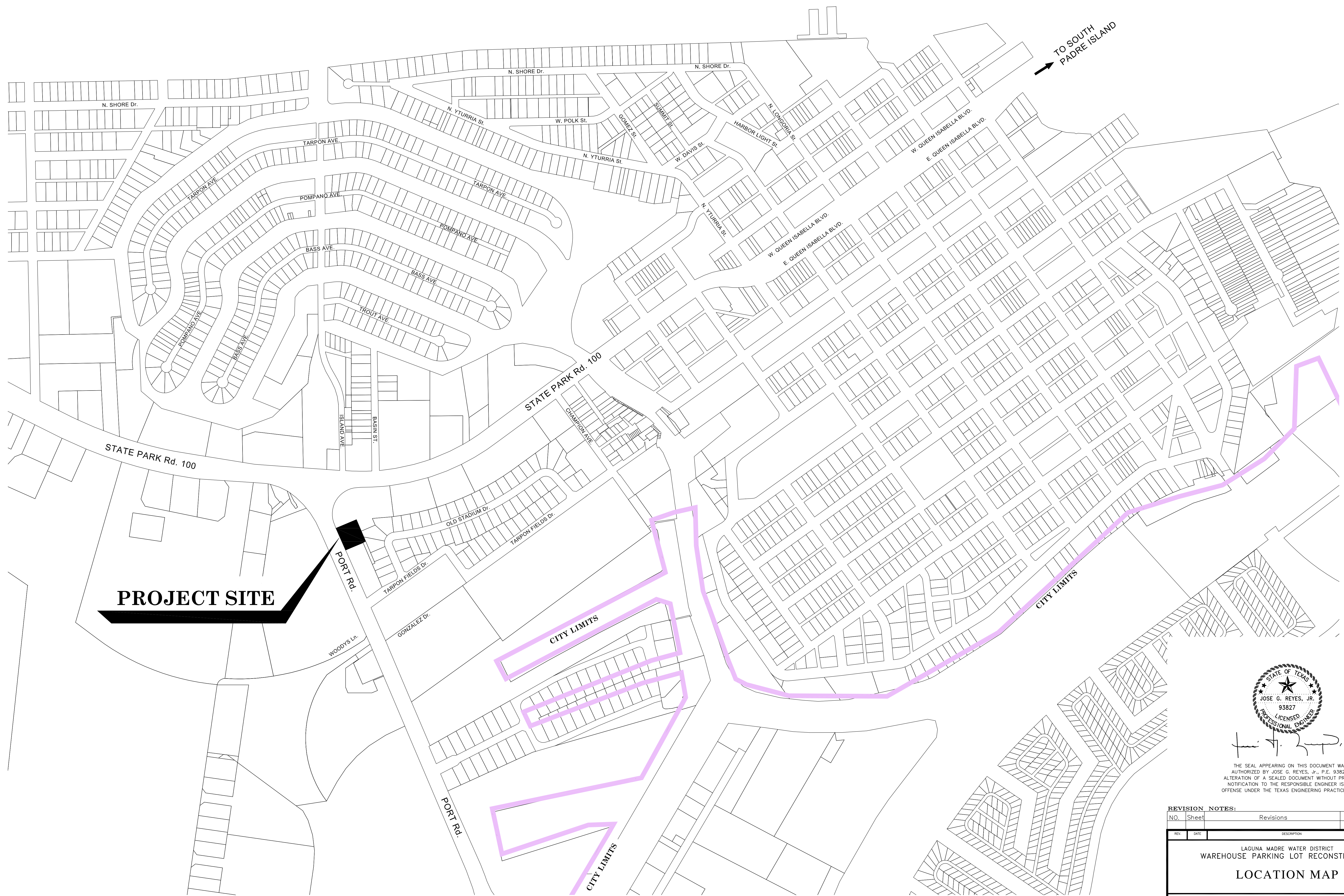
Table with columns: REVISION NOTES, NO., Sheet, Revisions, Date, Approved. Includes project title 'LAGUNA MADRE WATER DISTRICT WAREHOUSE PARKING LOT RECONSTRUCTION', 'GENERAL NOTES', and 'SIGLER, WINSTON, GREENWOOD AND ASSOCIATES SWG ENGINEERING, LLC'.

ISSUED FOR CONSTRUCTION

FILE PATH: C:\Users\jgud\Desktop\SWG\Projects\Port\PROJECTS\22-125 LMDP PARKING LOT RECONSTRUCTION\Working Drawings\Structures\Drafting\Location Map DATE: 4/7/24



TO SOUTH PADRE ISLAND



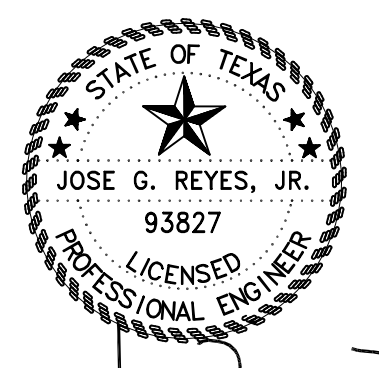
**PROJECT SITE**

CITY LIMITS

CITY LIMITS

CITY LIMITS

**PORT ISABEL**



THE SEAL APPEARING ON THIS DOCUMENT WAS AUTHORIZED BY JOSE G. REYES, JR., P.E. 93827. ALTERATION OF A SEALED DOCUMENT WITHOUT PROPER NOTIFICATION TO THE RESPONSIBLE ENGINEER IS AN OFFENSE UNDER THE TEXAS ENGINEERING PRACTICE ACT.

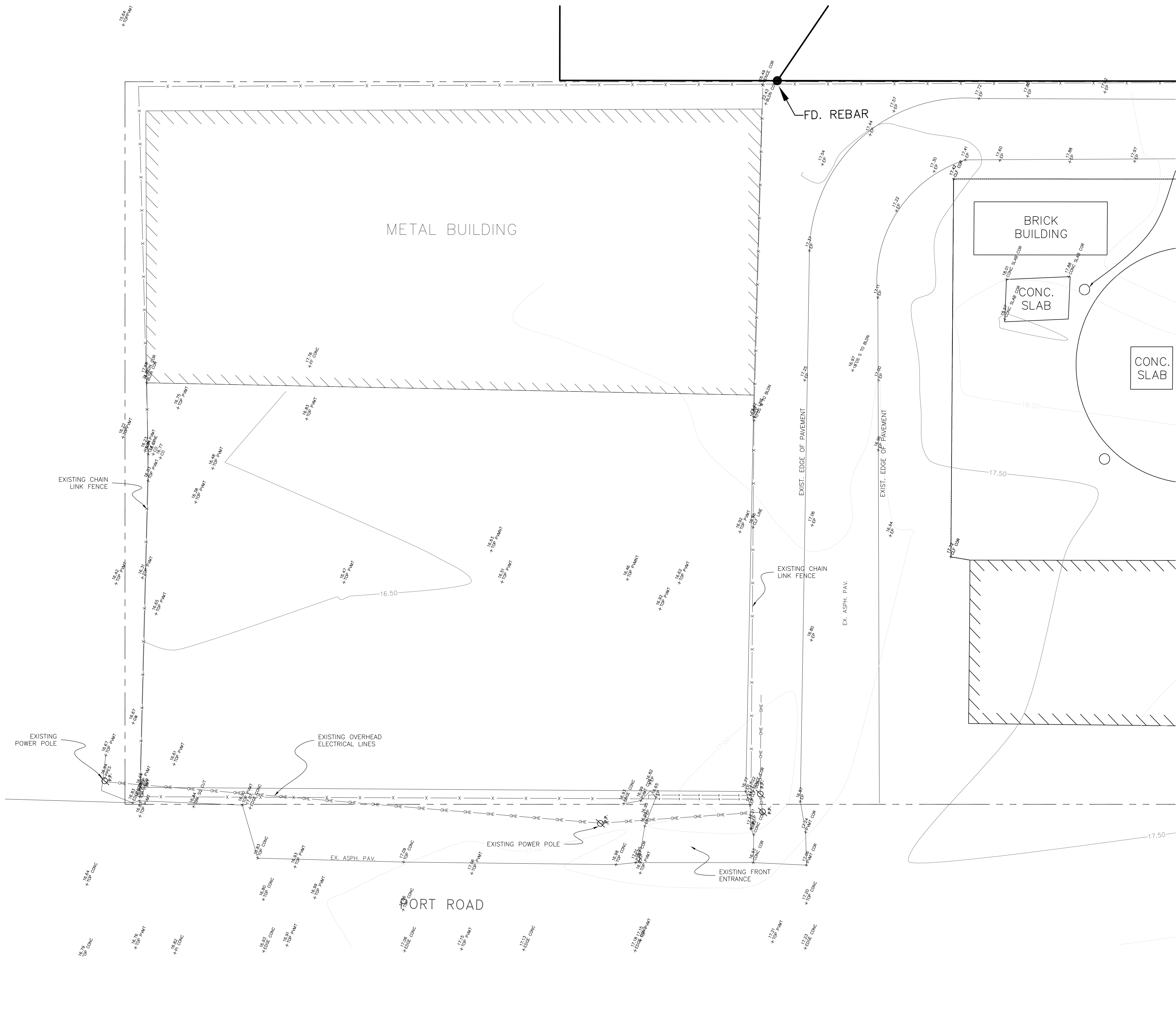
**ISSUED FOR CONSTRUCTION**

REVISION NOTES:				
NO.	Sheet	Revisions	Date	Approved
REV.	DATE	DESCRIPTION		BY
LAGUNA MADRE WATER DISTRICT WAREHOUSE PARKING LOT RECONSTRUCTION <b>LOCATION MAP</b>				
SIGLER, WINSTON, GREENWOOD AND ASSOCIATES <b>SWG ENGINEERING, LLC</b> TEXAS FIRM REGISTRATION NO. F-592 WESLACO, TEXAS				
DRAWN:	R.G.	CHECKED:	J.R.	DRAWING NO.:
DATE:	APRIL 2024	PROJECT NO.:	22-125	C2.0 of 6

**BENCH MARK:**  
LOCATED ON THE NORTHWEST CORNER OF PROPERTY WITH A SQUARE CUT ON THE CONCRETE PAVEMENT WITH COORDINATE VALUES OF AS FOLLOWS:  
(NORTHING: 16553079.8301, EASTING: 1404668.3839)  
ELEVATION: 16.90

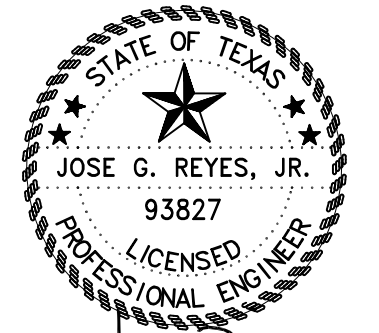
NOTICE: ANY CHANGES TO OR USES OF THESE DOCUMENTS / DRAWINGS WITHOUT THE WRITTEN CONSENT OF JOSE REYES, PE ARE STRICTLY PROHIBITED.

FILE PATH: C:\Users\jguy\Desktop\SWG\Projects\Four\PROJECTS\22-125 LMD Survey of Existing Structures\Drafting\Working\22-125 LMD Parking Lot Reconstruction\22-125 LMD Parking Lot Reconstruction.dwg DATE: 4/17/24



**UTILITY NOTES:**  
 EXISTING ABOVE GROUND UTILITIES AND TOPOGRAPHY HAVE BEEN PLOTTED BY DIRECT FIELD INFORMATION. UNDERGROUND UTILITIES HAVE BEEN PLOTTED FROM VARIOUS SOURCES AND LOCATORS. CONTRACTOR WILL BE REQUIRED TO ESTABLISH THEIR EXACT LOCATION, DEPTH, AND SIZE. THE CONTRACTOR IS ALSO RESPONSIBLE FOR THE REPLACEMENT OR REPAIR OF ALL CUT OR BROKEN WATER LINES, IRRIGATION LINES, FORCE MAINS, SPRINKLER SYSTEMS, GAS LINE, ELECTRICAL LINES, CABLES, ETC.  
 NOTICE:  
 ANY CHANGES TO OR USES OF THESE DOCUMENTS / DRAWINGS WITHOUT THE WRITTEN CONSENT OF JOSE REYES, PE ARE STRICTLY PROHIBITED.

**BENCH MARK:**  
 LOCATED ON THE NORTHWEST CORNER OF PROPERTY WITH A SQUARE CUT ON THE CONCRETE PAVEMENT WITH COORDINATE VALUES OF AS FOLLOWS:  
 (NORTHING: 16553079.8301, EASTING: 1404668.3839)  
 ELEVATION: 16.90

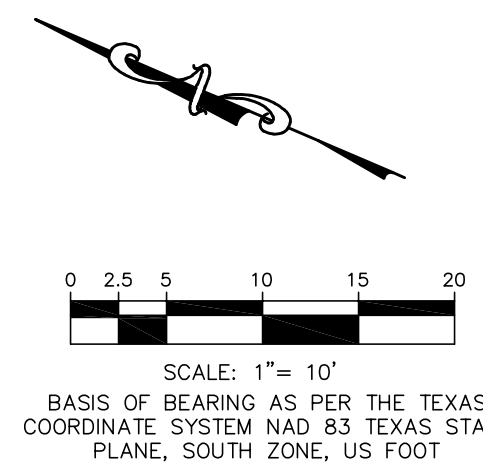
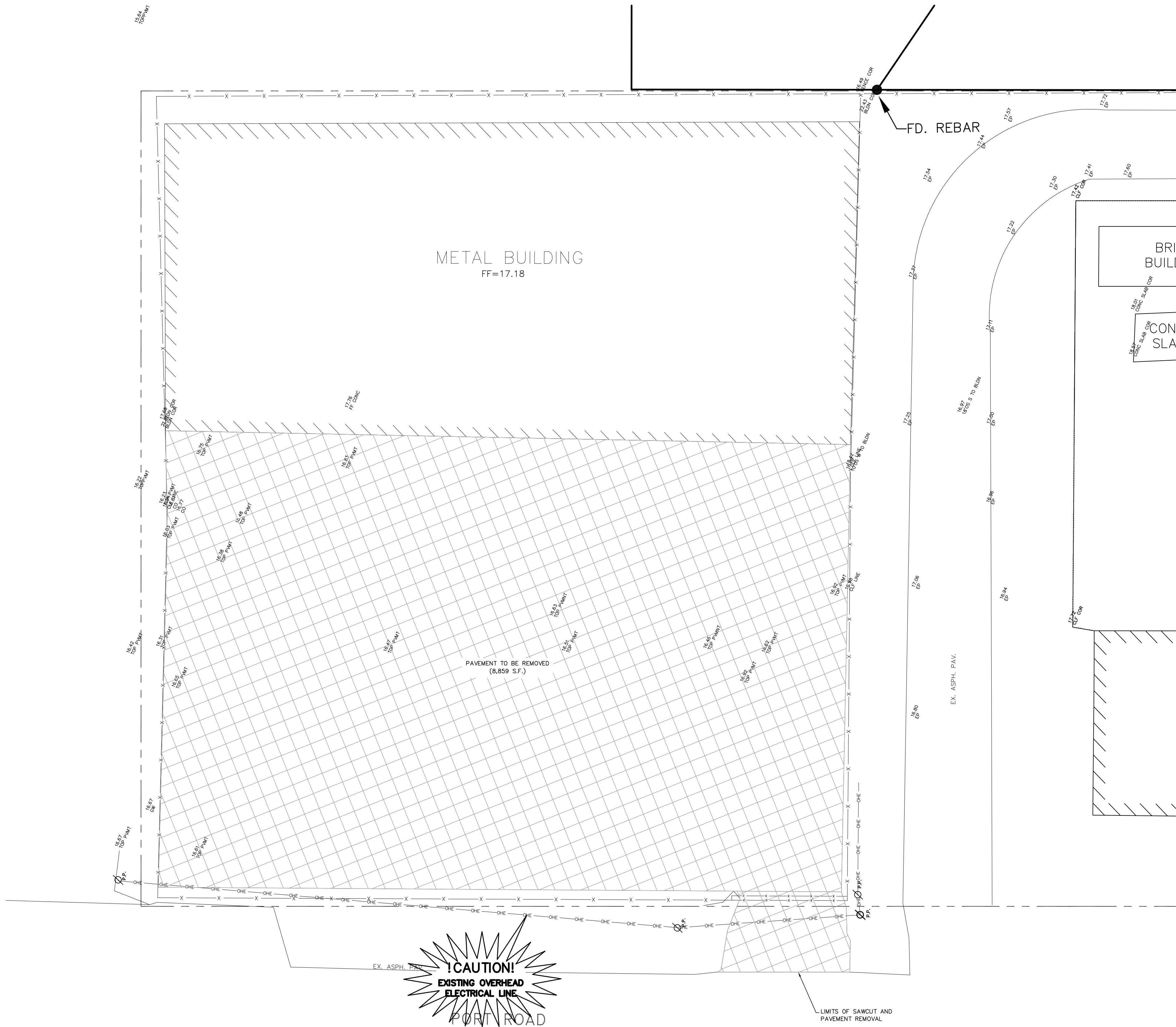


THE SEAL APPEARING ON THIS DOCUMENT WAS AUTHORIZED BY JOSE G. REYES, JR., P.E. 93827. ALTERATION OF A SEALED DOCUMENT WITHOUT PROPER NOTIFICATION TO THE RESPONSIBLE ENGINEER IS AN OFFENSE UNDER THE TEXAS ENGINEERING PRACTICE ACT.

ISSUED FOR CONSTRUCTION

REVISION NOTES:			
NO.	Sheet	Revisions	Date Approved
REV.	DATE	DESCRIPTION	BY
LAGUNA MADRE WATER DISTRICT WAREHOUSE PARKING LOT RECONSTRUCTION <b>EXISTING CONDITIONS</b>			
SIGLER, WINSTON, GREENWOOD AND ASSOCIATES <b>SWG ENGINEERING, LLC</b> TEXAS FIRM REGISTRATION NO. F-592 WESLACO, TEXAS			
DRAWN:	R.G.	CHECKED:	J.R.
DATE:	APRIL 2024	PROJECT NO.:	22-125
			DRAWING NO. <b>C3.0</b> OF 6

FILE PATH: C:\Users\LD\OneDrive\SWG Engineering, LLC\Dropbox\SWG Projects\Four\Projects\22-125 LMD Parking Lot Reconstruction\2024-Demolition Plan DATE: 4/7/24



PROPOSED		EXISTING		TYPE A INLET		TYPE A INLET W/EXT.		POWER POLE		GATE VALVE & BOX		SPOT GRADE		SAN. SEWER MANHOLE		FIRE HYDRANT		STORM MANHOLE		DUAL SAN. SEWER SERVICE		DUAL WATER SERVICE		SINGLE SAN. SEWER SERVICE		SINGLE WATER SERVICE	
[Symbol]	[Symbol]	[Symbol]	[Symbol]	[Symbol]	[Symbol]	[Symbol]	[Symbol]	[Symbol]	[Symbol]	[Symbol]	[Symbol]	[Symbol]	[Symbol]	[Symbol]	[Symbol]	[Symbol]	[Symbol]	[Symbol]	[Symbol]	[Symbol]	[Symbol]	[Symbol]	[Symbol]	[Symbol]	[Symbol]	[Symbol]	[Symbol]

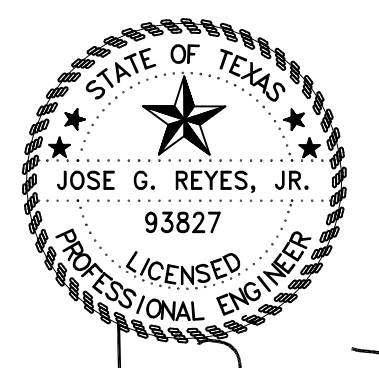
  

PROPOSED		EXISTING		SIGN		IRRIGATION VALVE		WATER METER		CHAIN LINK FENCE		SAN. SEWER LINE		WATER LINE		STORM LINE		OVERHEAD POWER LINE		FIBER OPTIC LINE		GAS LINE		EDGE OF PAVEMENT		CENTERLINE PAVEMENT		EASEMENT LINE	
[Symbol]	[Symbol]	[Symbol]	[Symbol]	[Symbol]	[Symbol]	[Symbol]	[Symbol]	[Symbol]	[Symbol]	[Symbol]	[Symbol]	[Symbol]	[Symbol]	[Symbol]	[Symbol]	[Symbol]	[Symbol]	[Symbol]	[Symbol]	[Symbol]	[Symbol]	[Symbol]	[Symbol]	[Symbol]	[Symbol]	[Symbol]	[Symbol]	[Symbol]	[Symbol]

- GENERAL DEMOLITION NOTES:**
- CONTRACTOR SHALL BE RESPONSIBLE FOR REMOVAL OF THE EXISTING STRUCTURES, RELATED UTILITIES, PAVING UNDERGROUND STORAGE TANKS AND ANY OTHER EXISTING IMPROVEMENTS AS NOTED.
  - CONTRACTOR IS TO REMOVE AND DISPOSE OF ALL DEBRIS, RUBBISH AND OTHER MATERIALS RESULTING FROM PREVIOUS AND CURRENT DEMOLITION OPERATIONS. DISPOSAL WILL BE IN ACCORDANCE WITH ALL LOCAL, STATE AND/OR FEDERAL REGULATIONS GOVERNING SUCH OPERATIONS.
  - THE GENERAL CONTRACTOR SHALL TAKE ALL PRECAUTIONS NECESSARY TO AVOID PROPERTY DAMAGE TO ADJACENT PROPERTIES DURING THE CONSTRUCTION PHASES OF THIS PROJECT. THE CONTRACTOR WILL BE HELD SOLELY RESPONSIBLE FOR ANY DAMAGES TO THE ADJACENT PROPERTIES OCCURRING DURING THE CONSTRUCTION PHASES OF THIS PROJECT.
  - THE CONTRACTOR IS SPECIFICALLY CAUTIONED THAT THE LOCATION AND/OR ELEVATION OF EXISTING UTILITIES AS SHOWN ON THESE PLANS IS BASED ON RECORDS OF THE VARIOUS UTILITY COMPANIES, AND WHERE POSSIBLE, MEASUREMENTS TAKEN IN THE FIELD. THE INFORMATION IS NOT TO BE RELIED ON AS BEING EXACT OR COMPLETE. THE CONTRACTOR MUST CALL THE APPROPRIATE UTILITY COMPANY AT LEAST 72 HOURS BEFORE ANY EXCAVATION TO REQUEST EXACT FIELD LOCATION OF UTILITIES.
  - IF DEMOLITION OR CONSTRUCTION ON SITE WILL INTERFERE WITH THE TRAFFIC FLOW OR ADJACENT PROPERTY OWNER'S TRAFFIC FLOW, THE CONTRACTOR SHALL COORDINATE WITH THE ADJACENT PROPERTY OWNER(S), TO MINIMIZE THE IMPACT ON TRAFFIC FLOW. TEMPORARY RE-ROUTING OF TRAFFIC IS TO BE ACCOMPLISHED BY USING DOT APPROVED TRAFFIC BARRICADES, BARRELS, FENCES AND/OR CONES. TEMPORARY SIGNAGE AND FLAGMAN MAY BE ALSO NECESSARY.
  - CONTRACTOR SHALL BEGIN CONSTRUCTION ON ANY LIGHT POLES BASES FOR RELOCATED LIGHT FIXTURES AND RELOCATION OF ELECTRICAL SYSTEM AS SOON AS DEMOLITION BEGINS. CONTRACTOR SHALL BE AWARE THAT INTERRUPTIONS OF ANY LIGHT POLES SHALL NOT EXCEED 24 HOURS.
  - INTERRUPTION OF POWER TO ANY LIGHT POLES OR SIGNS SHALL NOT EXCEED (24) HOURS.

**CAUTION!**  
EXISTING OVERHEAD  
ELECTRICAL LINE  
PORT ROAD

LIMITS OF SAWCUT AND PAVEMENT REMOVAL



THE SEAL APPEARING ON THIS DOCUMENT WAS AUTHORIZED BY JOSE G. REYES, JR., P.E. 93827. ALTERATION OF A SEALED DOCUMENT WITHOUT PROPER NOTIFICATION TO THE RESPONSIBLE ENGINEER IS AN OFFENSE UNDER THE TEXAS ENGINEERING PRACTICE ACT.



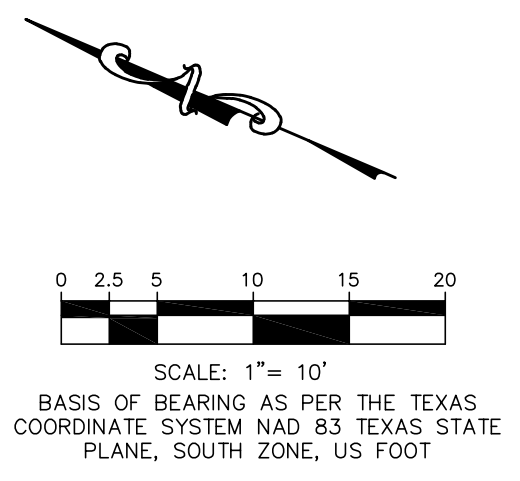
**UTILITY NOTES:**  
EXISTING ABOVE GROUND UTILITIES AND TOPOGRAPHY HAVE BEEN PLOTTED BY DIRECT FIELD INFORMATION. UNDERGROUND UTILITIES HAVE BEEN PLOTTED FROM VARIOUS SOURCES AND LOCATORS. CONTRACTOR WILL BE REQUIRED TO ESTABLISH THEIR EXACT LOCATION, DEPTH, AND SIZE. THE CONTRACTOR IS ALSO RESPONSIBLE FOR THE REPLACEMENT OR REPAIR OF ALL CUT OR BROKEN WATER LINES, IRRIGATION LINES, FORCE MAINS, SPRINKLER SYSTEMS, GAS LINE, ELECTRICAL LINES, CABLES, ETC.  
**NOTICE:**  
ANY CHANGES TO OR USES OF THESE DOCUMENTS / DRAWINGS WITHOUT THE WRITTEN CONSENT OF JOSE REYES, PE ARE STRICTLY PROHIBITED.

**BENCH MARK:**  
LOCATED ON THE NORTHWEST CORNER OF PROPERTY WITH A SQUARE CUT ON THE CONCRETE PAVEMENT WITH COORDINATE VALUES OF AS FOLLOWS:  
(NORTHING: 16553079.8301, EASTING: 1404668.3839)  
ELEVATION: 16.89

REVISION NOTES:				
NO.	Sheet	Revisions	Date	Approved
REV.	DATE	DESCRIPTION		BY
LAGUNA MADRE WATER DISTRICT WAREHOUSE PARKING LOT RECONSTRUCTION <b>DEMOLITION PLAN</b>				
SIGLER, WINSTON, GREENWOOD AND ASSOCIATES <b>SWG ENGINEERING, LLC</b> TEXAS FIRM REGISTRATION NO. F-592 WESLACO, TEXAS				
DRAWN:	R.G.	CHECKED:	J.R.	DRAWING NO.
DATE:	APRIL 2024	PROJECT NO.:	22-125	C4.0

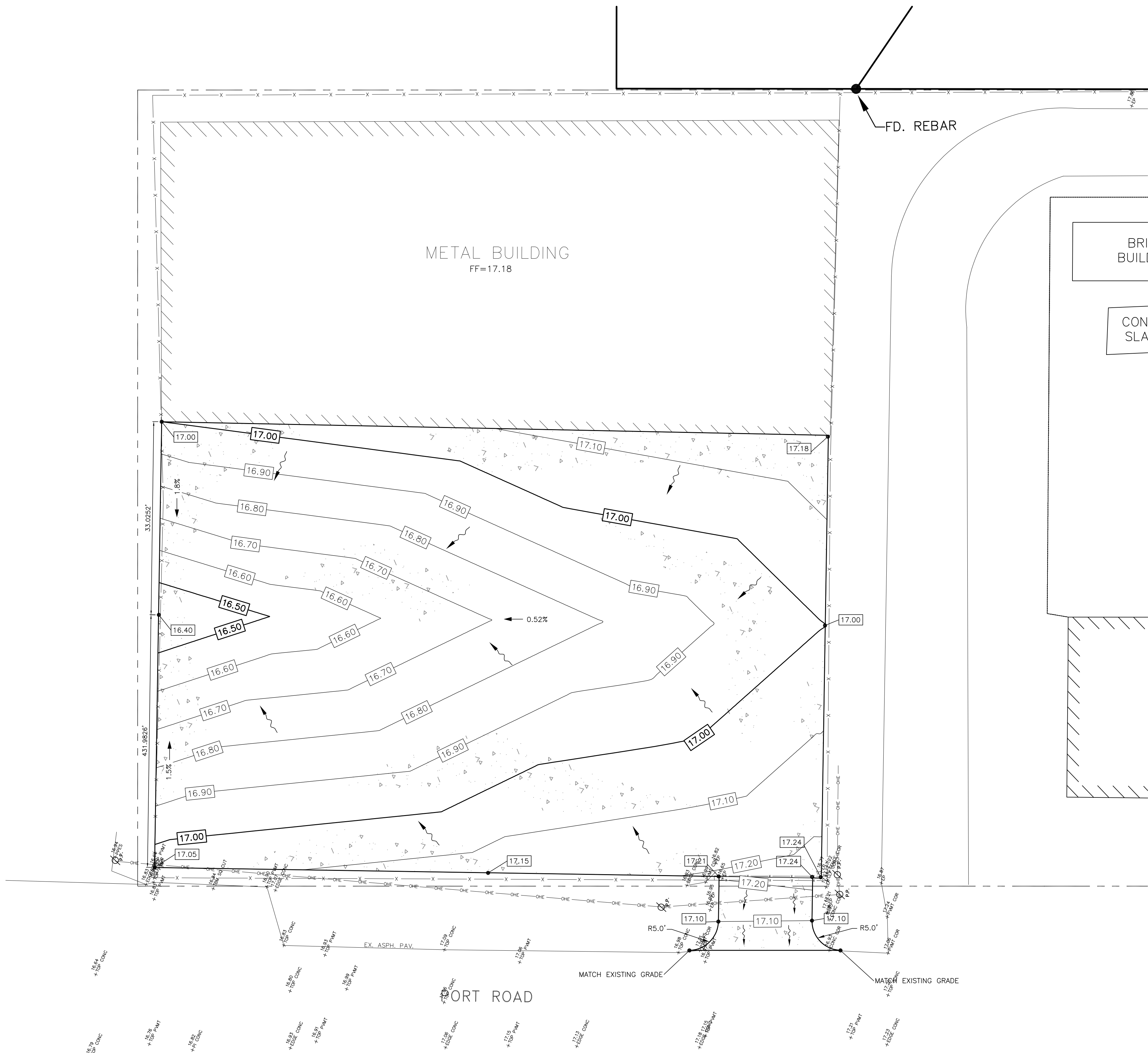
**ISSUED FOR CONSTRUCTION**



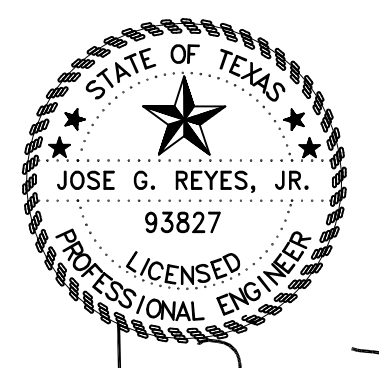


**LEGEND**

PROPOSED	EXISTING	PROPOSED	EXISTING	PROPOSED	EXISTING



**ISSUED FOR CONSTRUCTION**



THE SEAL APPEARING ON THIS DOCUMENT WAS AUTHORIZED BY JOSE G. REYES, JR., P.E. 93827. ALTERATION OF A SEALED DOCUMENT WITHOUT PROPER NOTIFICATION TO THE RESPONSIBLE ENGINEER IS AN OFFENSE UNDER THE TEXAS ENGINEERING PRACTICE ACT.

**REVISION NOTES:**

NO.	Sheet	Revisions	Date	Approved

REV.	DATE	DESCRIPTION	BY

LAGUNA MADRE WATER DISTRICT  
WAREHOUSE PARKING LOT RECONSTRUCTION  
**CONCRETE PAVEMENT GRADING PLAN**

*SIGLER, WINSTON, GREENWOOD AND ASSOCIATES*  
**SWG ENGINEERING, LLC**  
TEXAS FIRM REGISTRATION NO. F-592  
WESLACO, TEXAS

DRAWN: R.G.	CHECKED: J.R.	DRAWING NO. C6.0
DATE: APRIL 2024	PROJECT NO.: 22-125	OF 6



**UTILITY NOTES:**  
EXISTING ABOVE GROUND UTILITIES AND TOPOGRAPHY HAVE BEEN PLOTTED BY DIRECT FIELD INFORMATION. UNDERGROUND UTILITIES HAVE BEEN PLOTTED FROM VARIOUS SOURCES AND LOCATORS. CONTRACTOR WILL BE REQUIRED TO ESTABLISH THEIR EXACT LOCATION, DEPTH, AND SIZE. THE CONTRACTOR IS ALSO RESPONSIBLE FOR THE REPLACEMENT OR REPAIR OF ALL CUT OR BROKEN WATER LINES, IRRIGATION LINES, FORCE MAINS, SPRINKLER SYSTEMS, GAS LINE, ELECTRICAL LINES, CABLES, ETC.

**NOTICE:**  
ANY CHANGES TO OR USES OF THESE DOCUMENTS / DRAWINGS WITHOUT THE WRITTEN CONSENT OF JOSE REYES, PE ARE STRICTLY PROHIBITED.

**BENCH MARK:**  
LOCATED ON THE NORTHWEST CORNER OF PROPERTY WITH A SQUARE CUT ON THE CONCRETE PAVEMENT WITH COORDINATE VALUES OF AS FOLLOWS:  
(NORTHING: 16553079.8301, EASTING: 1404668.3839)  
ELEVATION: 16.90

FILE PATH: C:\Users\JGROD\Desktop\SWG\Projects\Four\PROJECTS\22-125 LMDP Parking Lot Reconstruction\Working\Drawings\Concrete Paving Grading Plan DATE: 4/17/24